

# HOW TO DETERMINE THE GENDER OF YOUR CRAYFISH

## MALE VS FEMALE

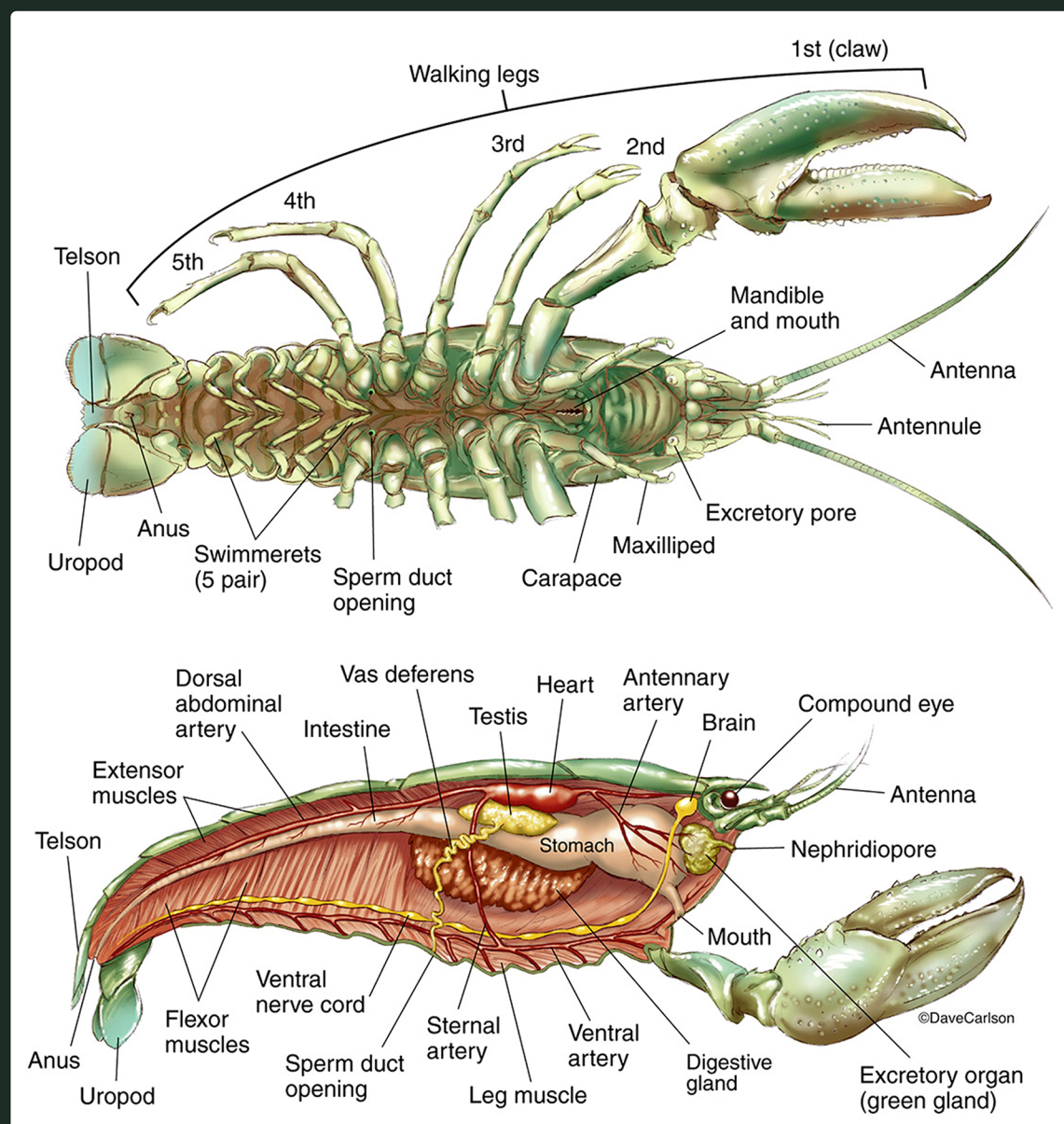
### MALE CRAYFISH

1. Larger in size when sexually matured.
2. The claw is larger in female crayfish.
3. Narrow abdomen.
4. Strong and fully developed Gonopod.

### FEMALE CRAYFISH

1. Not as large as the male.
2. The claw remains comparatively shorter.
3. Wider abdomen for storing eggs.
4. Gonopod is not as developed as the males.

## ANATOMY OF CRAYFISH



## HOW TO TELL IF A CRAYFISH IS MALE OR FEMALE?

### 1. INSPECT THE GONOPOD



**MALE**

The Gonopod is very developed and large.



**FEMALE**

You'll be barely able to see the Gonopod.

### 2. MALE CRAYFISH HAVE CLASPERS, FEMALES HAVE HOLES

In the male crayfish, the fourth set of pereopods (walking legs) has a nodule at the base. These are called Claspers. The females don't have these claspers.

In the female crayfishes, the third set of pereopods will have two holes at each side of the pereopod's base. Eggs come out from these holes.

### 3. MALE CRAYFISH ARE LARGER



**Male**



**Female**

When sexually matured, males are typically larger than the females.

### 4. CLAWS ARE MORE PROMINENT IN MALE CRAYFISH



**Male**



**Female**

As you can see, the claws are larger and more prominent in the male crayfish