

# How to Sex Your Pacman Frog



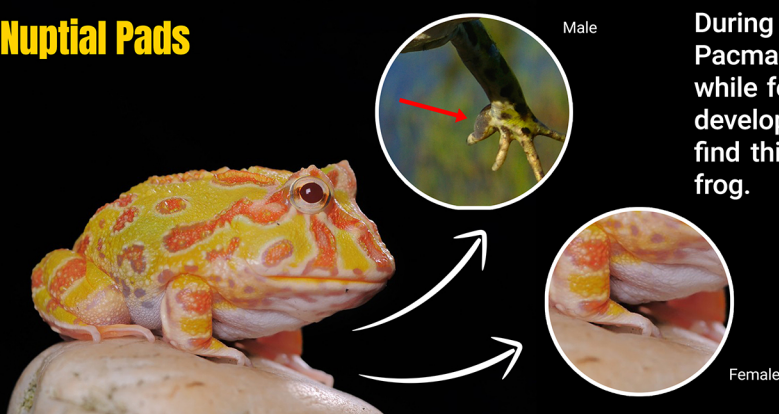
## How Old Does A Pacman Frog Need To Be To Tell The Gender?



A Pacman frog needs to be at least seven to eight months old to tell its gender. But, they need to be 12-16 months old to determine their gender identification signs better.

## 7 Ways to Determine Gender

### 1. Nuptial Pads



During mating season, male Pacman frogs develop nuptial pads while female Pacman frogs do not develop them. Generally, you can find this in matured male Pacman frog.

### 2. Size



Usually, the female Pacman frogs tend to be larger than the male Pacman frogs.

An adult female Pacman frog can reach up to seven inches (10-18 cm).

### 4. Croaking

Male Pacman frogs croak more often than female Pacman frogs.

The male Pacman frog croaks at their loud and high peach.

### 6. Chest And Arms

If you notice the chest of a male Pacman frog, you can see the darker chest.

Especially, their chest color becomes darker in their mating season.

The chest of female Pacman frogs remains white all the time.

### 3. Skin



Generally, male Pacman frogs have rougher skin while female Pacman frogs have smoother skin.

### 6. Color



The skin color of the female Pacman frog is kind of tanned. They can be brown and albino too.

The male Pacman frog can be ornately colored. They can be dark green, yellow, lime, etc.

### 7. Nose And Throats

If your Pacman frog's nose is triangular shaped, then it is female.

Otherwise, your Pacman frog is male if its nose is flattened.